

Desktop Dispenser

JTS Series

CONTENTS

KINTAI®

- ① JTS Series Features Introduction
- ② JTS Series Layout Specification
- ③ JTS Optional Accessories
- ④ JTS Series Application Case

JTS Series Features Introduction



JTS series facilitate precise fluid dispensing in an automated solution.

True 3D motion control makes programming dots, lines, circles, arcs, and compound arcs easier with cost-effective.

Its segmentations R series (360° Rotation) 、 V series (Vision) 、 D series (Double station) 、 P series (Pro) are freely combined if needed, and easily integrates into in-line transfer systems, rotary tables, and pallet assembly lines.

Features:

1. True 3D motion control
2. Simplified setup and programming via Teach Pendant or file importation
3. Reduced material, labor, and ownership costs with rugged, reliable construction
4. Small footprint, wide range of work envelopes, it's new manufacturing opportunities



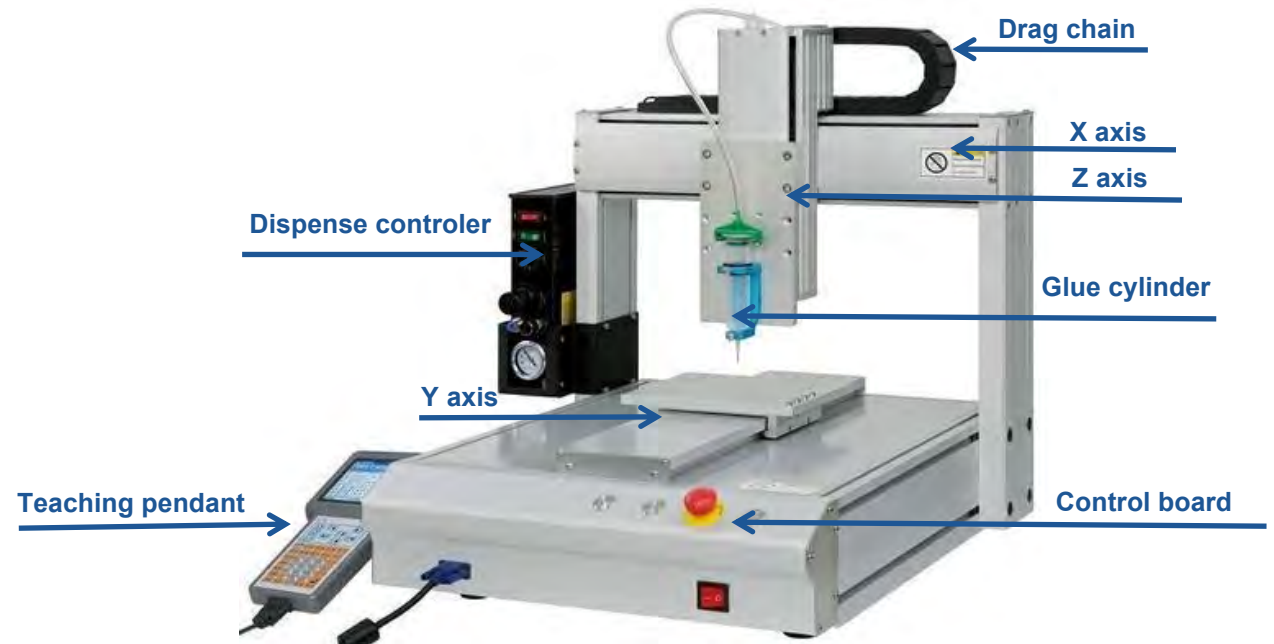
JTS Series Layout Specification



JTS series, 3 aixe XYZ fluid dispensing robot, platforms range from 300 x 300 mm to 600 x 600 mm, making them an ideal solution for batching or critical dispensing applications.

Specifications:

1. JTS Series Basic Model: JTS-3/4/5/6
2. 3 aixe robot, X/Y/Z Aixe Working Range:
 - I. JTS-3: 300/300/100mm
 - II. JTS-4: 400/400/100mm
 - III. JTS-5: 500/500/100mm
 - IV. JTS-6: 600/600/100mm
3. Load Capacity : 5Kg (max)
4. XY/Z Speed : 500/300mm/s (max)
5. XY/Z Accuracy : $\pm 0.02/\pm 0.02$ mm
6. Voltage & Power : AC110V~230V



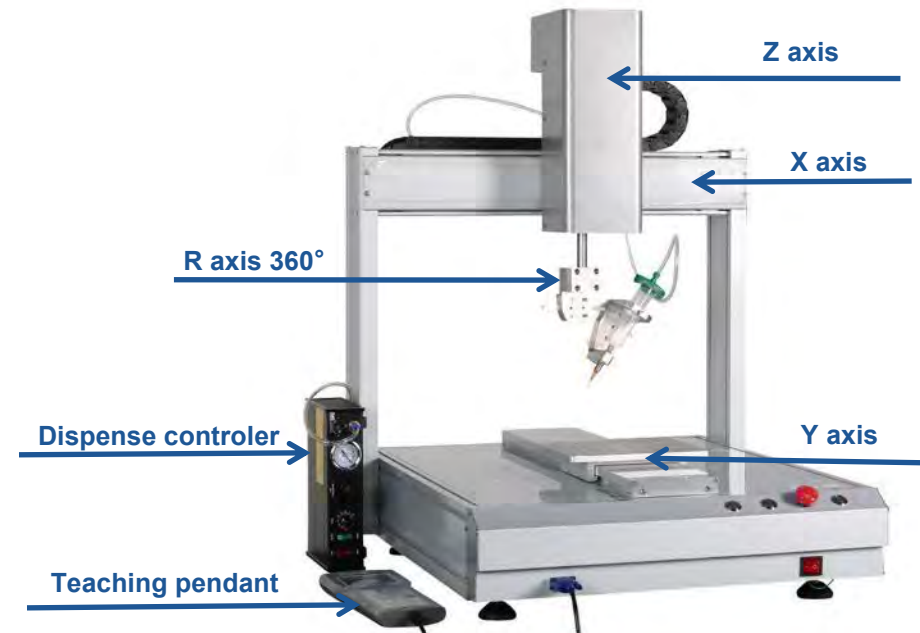
JTS Series Segmentations R



JTS-R series, 4 aixe XYZR fluid dispensing robot, the 4th axis allows for dispensing at any angle along the 360° rotation plane.

Specifications:

1. JTS-R Series Model: JTS-3R/4R/5R/6R
2. 4 aixe robot, X/Y/Z/R Aixe Working Range:
 - I. JTS-3R: 300/300/100mm R:360°
 - II. JTS-4R: 400/400/100mm R:360°
 - III. JTS-5R: 500/500/100mm R:360°
 - IV. JTS-6R: 600/600/100mm R:360°
3. Load Capacity : 5Kg (max)
4. XY/Z Speed : 500/300mm/s (max)
5. XY/Z Accuracy : $\pm 0.02/\pm 0.02$ mm
6. Voltage & Power : AC110V~230V



JTS Series Segmentations V



JTS-V series, 3 axis XYZ fluid dispensing robot, specialized vision-guided windows software and camera, to verify product placement and self-correct dispensing motion path with the automated optical inspection (AOI) software.

Specifications:

1. JTS-V Series Model: JTS-3V/4V/5V/6V
2. 3 axis robot, with IPC vision system
3. X/Y/Z Aixe Working Range:
 - I. JTS-3V: 300/300/100mm
 - II. JTS-4V: 400/400/100mm
 - III. JTS-5V: 500/500/100mm
 - IV. JTS-6V: 600/600/100mm
4. Load Capacity : 5Kg (max)
5. XY/Z Speed : 500/300mm/s (max)
6. XY/Z Accuracy : $\pm 0.02/\pm 0.02$ mm
7. Voltage & Power : AC110V~230V



JTS Series Segmentations D



JTS-D series 4 aixs XYZ fluid dispensing robot, extra double stations to increase work efficiency of product's load and unload, and do the most thing in the shortest time.

Specifications:

1. JTS-D Series Model: JTS-3D/4D/5D/6D
2. 4 aixs robot, with double stations
3. X/Y/Z/R Aixs Working Range:
 - I. JTS-3D: 300/300/100mm
 - II. JTS-4D: 400/400/100mm
 - III. JTS-5D: 500/500/100mm
 - IV. JTS-6D: 600/600/100mm
4. Load Capacity : 5Kg (max)
5. XY/Z Speed : 500/300mm/s (max)
6. XY/Z Accuracy : $\pm 0.02/\pm 0.02$ mm
7. Voltage & Power : AC110V~230V



JTS Series Segmentations RV

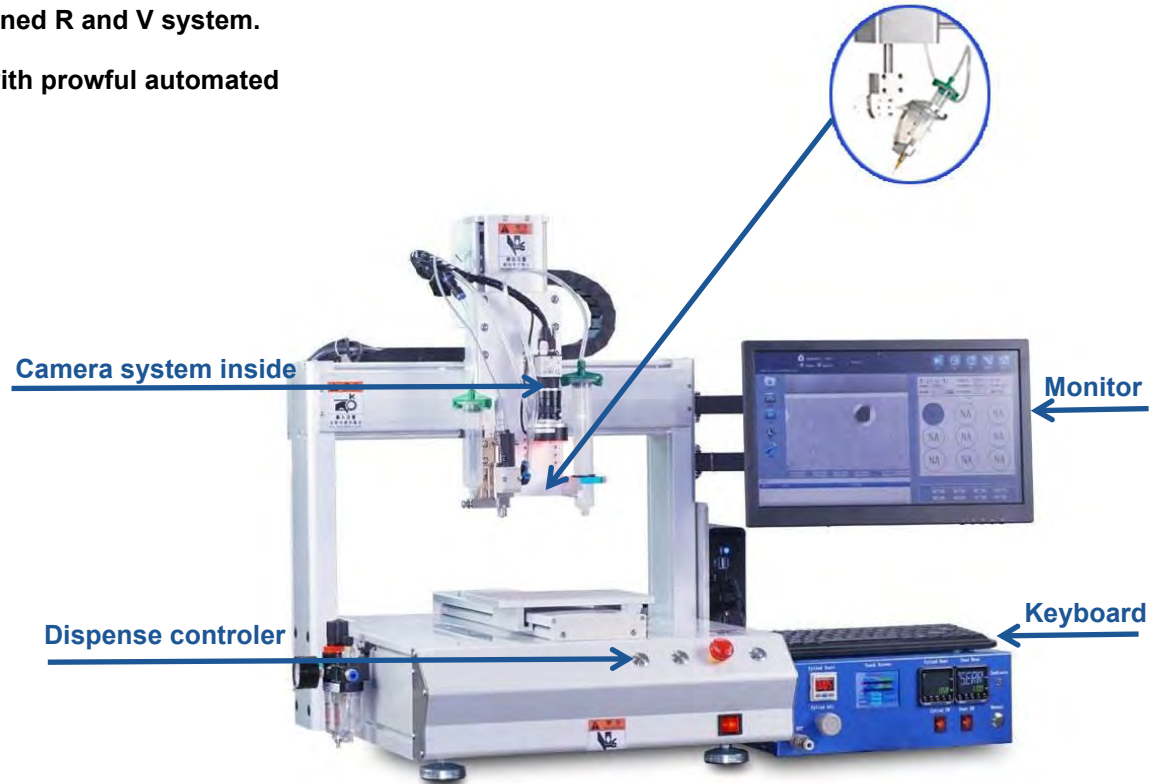


JTS-RV series, 4 axes XYZR fluid dispensing robot, combined R and V system.

the 4th axis 360° rotation plus camera and windows software with powerful automated optical inspection (AOI) software.

Specifications:

1. JTS-RV Series Model: JTS-3RV/4RV/5RV/6RV
2. 4 axes robot, with R axis & IPC vision system
3. X/Y/Z/R Axis Working Range:
 - I. JTS-3RV: 300/300/100mm R:360°
 - II. JTS-4RV: 400/400/100mm R:360°
 - III. JTS-5RV: 500/500/100mm R:360°
 - IV. JTS-6RV: 600/600/100mm R:360°
4. Load Capacity : 5Kg (max)
5. XY/Z Speed : 500/300mm/s (max)
6. XY/Z Accuracy : $\pm 0.04/\pm 0.04$ mm
7. Voltage & Power : AC110V~230V



JTS Series Segmentations Pro



JTS-P series, 3 axis XYZ fluid dispensing robot, with Servo motor + screw rod module, compare with JTS basic, it has faster speed and higher repeated accuracy, to achieve narrow position and underfill edge dispensing.

Specifications:

1. JTS-Pro Series Model: JTS-3P/4P/5P/6P
2. 3 axis robot, with higher precision & payload
3. Servo motor + double guide rail + ball screw
4. X/Y/Z/R Ais Working Range:
 - I. JTS-3P: 300/300/100mm
 - II. JTS-4P: 400/400/100mm
 - III. JTS-5P: 500/500/100mm
 - IV. JTS-6P: 600/600/100mm
5. Load Capacity : 10Kg (max)
6. XY/Z Speed : 800/500mm/s (max)
7. XY/Z Accuracy : $\pm 0.01/\pm 0.01$ mm
8. Voltage & Power : AC110V~230V



JTS Series Teach Pendant



JTS Teach Pendant is a entry-level of 3D motion control system. It makes programming dots, lines, circles, arcs, and compound arcs easier for 3-4 aixs XYZR robots

Features:

1. Small teaching pendant easy contorl with cost-effective
2. The glue path could be combined by straight line, point, polyline, arc line, cure, circle etc.
3. English version user guide well received from over world

Number Button:

These keys are used to input numbers and letters to create a file name or set a parameter

Navigation Button:

↑ ↓ ← → Z ↑ Z ↓

Control jogs of X,Y or Z axis.

SHF: Change the jog speed level

#:Enter the array parameters setting interface, or enter the system' s password input interface

V+,V-:Change the jogging speed level, switch between positive and negative value

Function Button:

F1: Create a new file.Insert a drawing.Start or pause a work

F2: Edit or stop a process

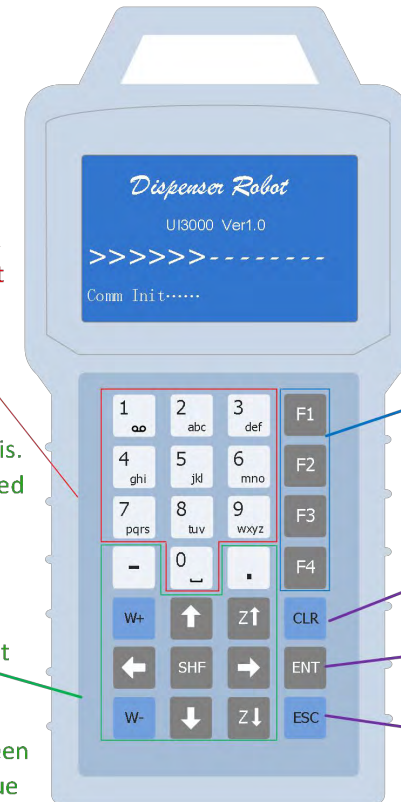
F3: Return to the origin point

F4:Set parameters

CLR:Delete a file or some points of a file

ENT:Process the current file,or save an edited file

ESC:Cancel an operation,or exit from current interface



IPC Software Introduction

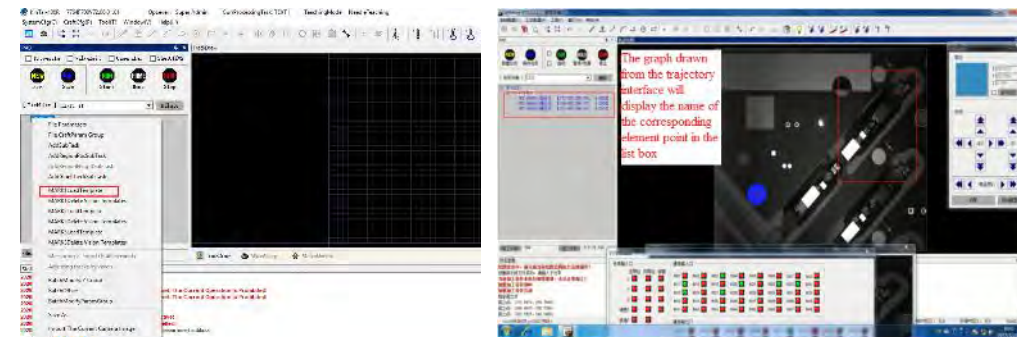


JTS IPC Software is a upper-level of 3D motion control system. It well coopare with industrial camera, specialized Charge-coupled Device (CCD) to verify product placement and self-correct dispensing motion path by the automated optical inspection (AOI) software.

Features:

1. CAD import, according to product module parameters (co-ordinate data), to generate glue path automatically
2. The glue path could be combined by straight line, point, polyline, arc line, cure, circle etc.
3. Function key included new task, insert, delete, bulk editing, copy, move & jump to current/other co-ordinate etc.
4. English version user guide and videos, get start quickly

ParamG	GlueCtrl Mode	TrackSpd (mm/s)	DelayOpen (ms)	PreOnDelay (ms)	OnDelay (ms)	PreOffDelay (ms)	OffDelay (ms)	PreOnDis (mm)	PreOffDis (mm)	Uplift (mm)
Track1	ParaCtrl	400	0	0	0	0	0	0	0	0
Track2	ParaCtrl	100	0	0	0	0	0	0	0	0
Track3	ParaCtrl	100	0	0	0	0	0	0	0	0
Track4	ParaCtrl	100	0	0	0	0	0	0	0	0
Track5	ParaCtrl	100	0	0	0	0	0	0	0	0
Track6	ParaCtrl	100	0	0	0	0	0	0	0	0
Track7	ParaCtrl	100	0	0	0	0	0	0	0	0
Track8	ParaCtrl	100	0	0	0	0	0	0	0	0
Track9	ParaCtrl	100	0	0	0	0	0	0	0	0
Track10	ParaCtrl	100	0	0	0	0	0	0	0	0



1. MC7744 Software installation 软件安装.mp4



2. Software upgarde 软件升级.mp4



3. CCD IP Setting 视频IP配置.mp4



4. Permission Setting 操作权限设置.mp4



5. Control Card Upgrade 控制卡升级.mp4



6. Camera Calibration and Migration 相机标定与偏移.mp4



7. New Task 新建文件.mp4



8. Task Z axis height and speed Settings 文件Z轴高度与...mp4



9. Optimized machining path 优化加工路径.mp4



10. CAD import CAD导入轨迹功能.mp4



Software Installation 软件安装.mp4



Dispenser User Manual_202110 21113804.pdf

JTS Series Segmentations Chart



	JTS	JTS-R	JTS-V	JTS-D	JTS-P
Axis	3	4	3	4	3
Program method	Teach Pendant	Teach Pendant	IPC Software	Teach Pendant	Teach Pendant
Vision	Optional	Optional	YES	Optional	Optional
Tip detector	N/A	N/A	YES	N/A	N/A
Closed loop encoding	N/A	N/A	YES	N/A	N/A
Glue quantity detection	Optional	Optional	Optional	Optional	Optional
Laser sensing	Optional	Optional	Optional	Optional	Optional

JTS Optional Accessories

KINTAI®



Most kind Cylinde holder



Most kind valve holder



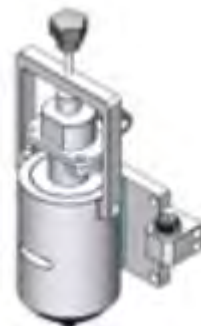
W aixs rotation mechanism



Manual angle adjust mechanism



Auxiliary push glue mechanism



Cylinde Hearter



AB glue mechanism



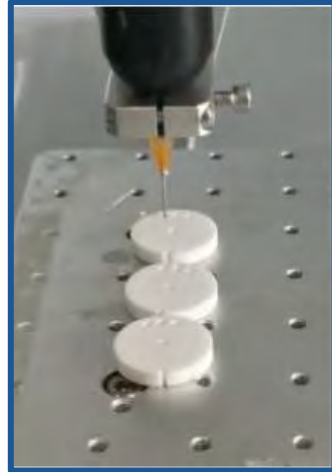
Tanks

JTS Series Application Case

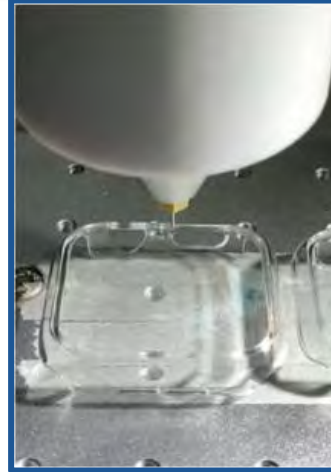
KINTAI®



Epoxy | Convex lens



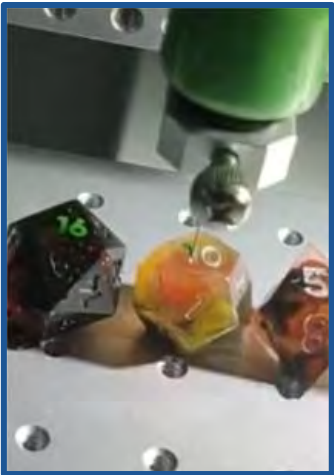
UV glue | Ceramic chip



Hot melt | iwatch case



Epoxy | Mirror



Ink | Dice



Silicone glue | Silicone ball



Silicone glue | Sucker



Coating | Motor