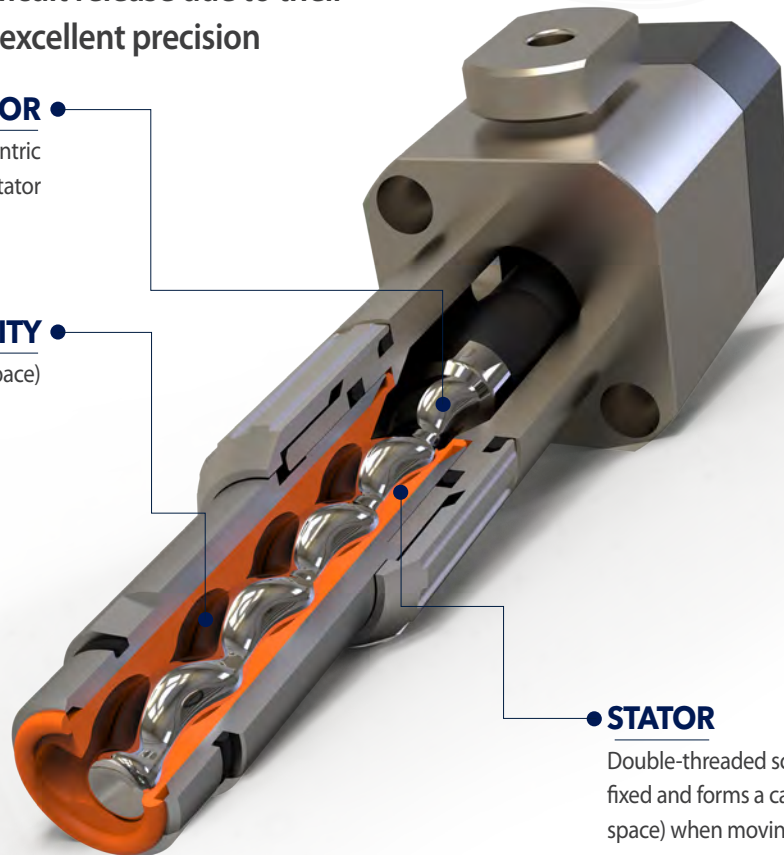


PRO-PUMP Principle & Features

Progressive cavity pumps allow accurate metering/feeding/dispensing of materials that are difficult release due to their innovative structure and excellent precision

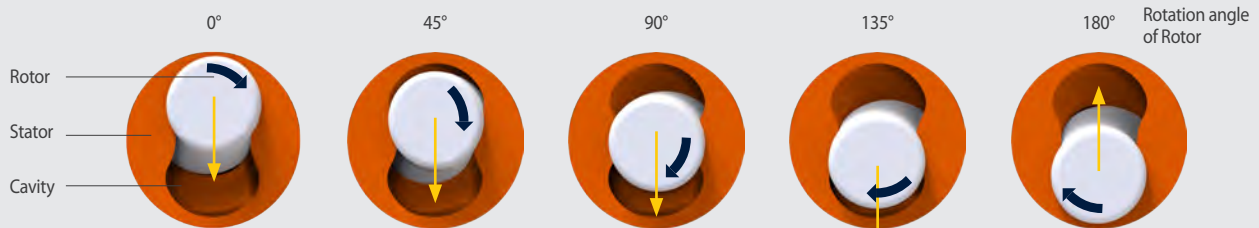
ROTOR ●
Single-threaded screw. Eccentric rotation when moving with stator

CAVITY ●
(Sealed space)



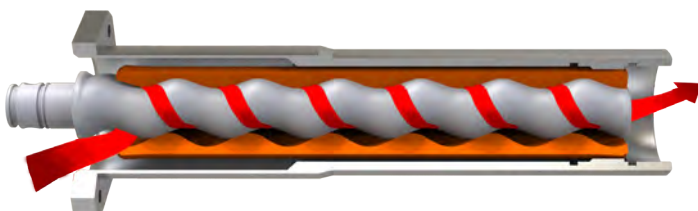
STATOR ●
Double-threaded screw, Stator is fixed and forms a cavity (sealed space) when moving with rotor.

“The combination of rotor and stator makes √Non-pulsating conveyance and √Precise metered displacement”



<Movement of cavity through 180° rotation of rotor>

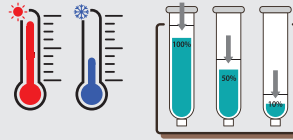
Since the cross-sectional area of cavity is always constant regardless of the position of the rotor, dispensing volume is also constant and dispensing volume per unit time is in direct proportion to rotation speed of rotor.



The cavity made by combination of rotor and stator is moved forward by the rotation of the rotor. Then, vacuum and pressure are generated at each of the pump inlet and outlet, resulting in successively dispensing of the material.

Accurate and consistent dispensing of material regardless of environmental factors

Due to the environment, materials are dispensed accurately and consistently even if viscosity changes or differential head changes in the container.



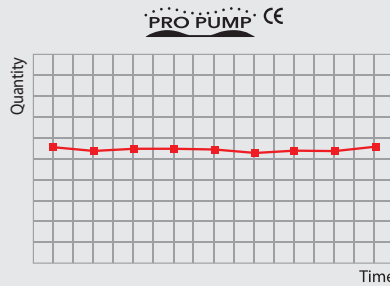
Clean dispensing without ball-up effect at the nozzle tip

The snuff-back function, which snuff back the material drop formed, eliminates or minimizes ball-up at the nozzle tip.



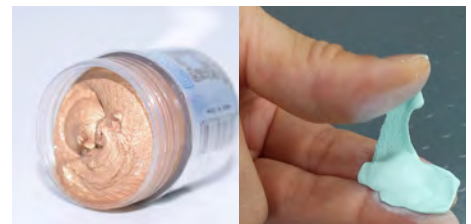
Consistent dispensing with non-pulsating by the movement of rotor and stator

Regardless of the position of the rotor, the cross-sectional area of constant cavity always create a constant pressure so that the exact metered volume can be dispensed consistently.



Even dispensing by precise metering of materials that are difficult to dispense by using gear pump or pneumatic valve

Precise volume of material with filler is dispensed without impairing fillers under the cavity displacement dispensing process.



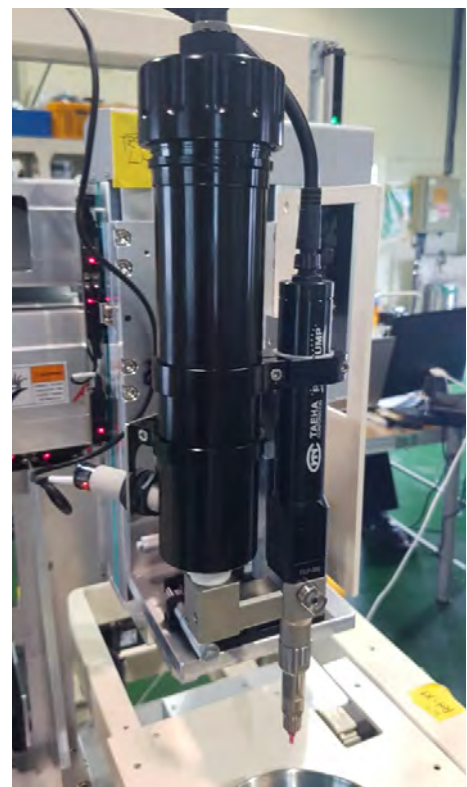
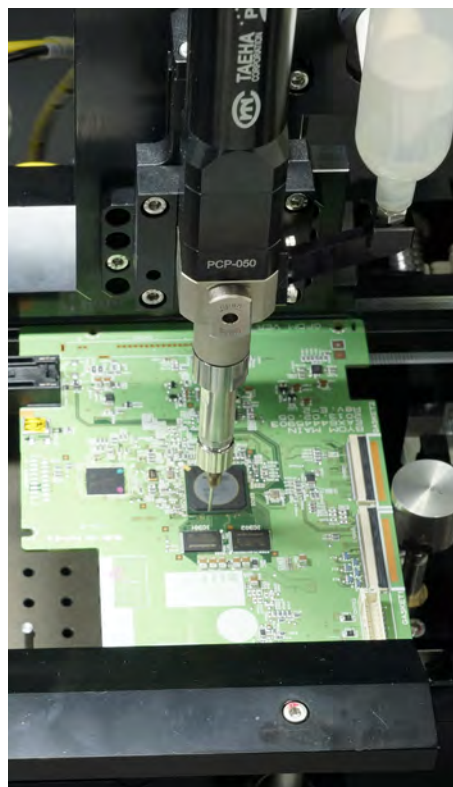
Disassembly and reassembly for maintenance and cleaning is easy because of simple structure of the pumping unit.



PCP-Series 1K PRO-PUMP®



Item	Model	PCP-005	PCP-015	PCP-050	PCP-150	PCP-500
Dimension (WxHxD) (mm)		27 x 27 x 230			29 x 29 x 280	
Weight		400g			650g	
Input Pressure		0 ~ 0,6MPa				
Max Dosing Pressure		3,0MPa	2,0MPa			1,0MPa
Viscosity		1 ~ 1.000,000 cPs				
Dosing Volume/Rev		≒0,0049ml	≒0,017ml	≒0,049ml	≒0,17ml	≒0,45ml
Motor Speed		1 ~ 120rpm				
Dosing Accuracy		± 1%				
Material of Stator		PF, F, EP, UPE, EPPF, EPUPE, FPF, FUPE, TPE, EPA				
Material Inlet Port		Inlet Adapter or Tap Type(BSPT 1/4)				
Material Outlet Port		LUER LOCK or BSPT 1/8				
Controller		PROCON-100				





Item	Model	PCP-1000	PCP-1500	PCP-2000	PCP-5000	PCP-15000
Dimension (WxHxD) (mm)		29 x 29 x 312	45 x 45 x 430	60 x 60 x 580		70 x 70 x 730
Weight		700g	2.5kg	5.0kg		8.0kg
Input Pressure		0 ~ 0.6MPa				
Max Dosing Pressure		1.2MPa	2.0MPa	2.5MPa	2.0MPa	
Viscosity		1 ~ 1,000,000 cPs				
Dosing Volume/Rev		≒1.1ml	≒1.8ml	≒2.2ml	≒5.5ml	≒15.5ml
Motor Speed		1 ~ 120rpm	1 ~ 150rpm			
Dosing Accuracy		± 1%				
Material of Stator		PF, F, EP, UPE, EPPF, EPUPE, FPF, FUPE, TPE, EPA				
Material Inlet Port		Inlet Adapter or BSPT 1/4	Inlet Adapter or BSPT 1/2	BSPT 1/2		BSPT 3/4
Material Outlet Port		LUER LOCK or BSPT 1/4	LUER LOCK or BSPT 3/8	BSPT 1/2		BSPT 3/4
Controller		PROCON-100	PROCON-1000			

PRO-PUMP PCP series is a compact and innovative 1-component dispenser that delivers excellent accuracy to the dispensing of difficult materials.

Because there is a perfect sealed space between the rotor and stator, it can maintain a higher degree of vacuum compared to the gear pump, so it has excellent material suction capability.

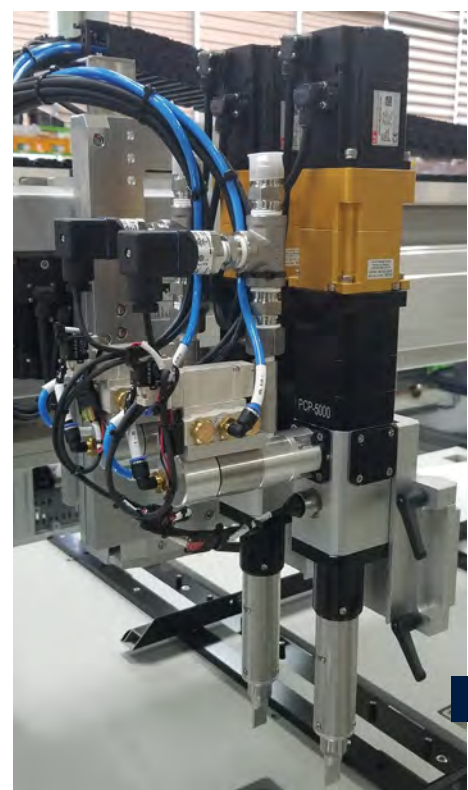
Non-pulsation, this can keep flow rate very constant.

The volume of the conveyed material is in proportion to the rotation speed of rotor, regardless of dosing pressure, so adjusting the number of rotor's rotations allows accurate conveyance and dispensing of materials which are difficult to handle.

PRO-PUMP can work without any valves and also the conveyance of material can be reversed.

TAEHA's innovate rubber forming technology makes it easy to dispense material containing filler of high degree.

(High Filler Stator, High Filler Rotor)



PCP BARREL MODULE SYSTEM
BARREL (30,50,70,100,200,300cc)



Material feeding : Barrel	Capacity(cc)
	30
	50
	70
	100
	200
300	

※ See the page of 70 for details

We provide the best dispensing
with the most suitable material
for the material and

<1K System



PCP CAN PUMP SYSTEM
CAN PUMP(1,3,5,18kg Can)



Material Feeding : Can Pump	Capacity (kg)
	1.0
	3.0
	5.0
	18.0

※ See the page of 30,31 and 58 for details

system by combining the PCP series feeding container/device/equipment dosing conditions.

PCP CARTRIDGE MODULE SYSTEM

CARTRIDGE
(170,340,650,1000cc,Sealant 330cc)

Configuration >



	Capacity (cc/Oz)
Material feeding: Cartridge	170 / 6
	340 / 12
	650 / 20
	1000 / 32
	Sealant Cartridge(330cc)

※ See the page of 72-73 for details



PCP TANK SYSTEM

TANK (1, 3, 5, 10, 20L)



	Capacity (L)
Material Feeding : Pressure Tank	1.0
	3.0
	5.0
	10.0
	20.0

※ See the page of 52-23 for details