

20:1

4037200

Model	20:1
Construction	Container height 468 mm
Type	
Version	Container 20 - 25 kg



Description

The Air-operated Grease Pump with pressure ratio from 20:1 is ideal applicable as feeding pump for ABNOX metering valves or as filling system.

This Air-operated Grease Pump is renowned for their high efficiency as well as their extremely low noise levels. Outstanding reliability due to high quality materials, seals and special change-over valve.

Recommendation:

Never let the pump system and especially not the suction tube rest on the floor. Keep them away from dirt, you will avoid damage to the pump and expensive repairs.

Spare Parts:

Description	Article-No.
Seal Kit Air Motor	4879500
Seal Kit Suction System	4039500
Conversion Kit	4039800
Repair Kit	4039400
Adapter cpl.	4021401

You will find more information in the downloads section under "Spare Parts List"

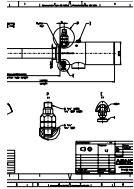


Technical Data

	4037200
Capacity container (kg)	20 - 25
Container height (mm)	468
Suction tube dia. (mm)	32
Suction tube length (mm)	473
Min. / Max. temperature (°C)	10 / 40
Specification for operation medium	Lubricants up to NLGI 3 / 5'000 m Pa.s
Output pressure (medium) at operating pressure 6 bar [bar]	115
Output pressure (medium) at operating pressure 10 bar [bar]	191
Delivery rate pro double stroke (cm ³)	7.5
Delivery rate at pump outlet [cm ³ /min]	890
Min. / Max. inlet operating pressure [bar]	2 / 10
Inlet operating pressure (compressed air) optimum [bar]	6
Max. air consumption [l/min.]	150
Connection (compressed air) internal thread	1/4" BSP
Connection (Medium) External Thread P	1/4" BSP

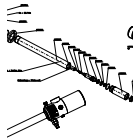


Downloads



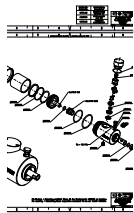
Dimensioned Sketch

Download PDF, 0.2 MB



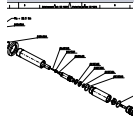
Spare Parts List

Download PDF, 1.2 MB



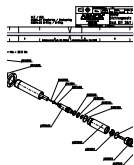
Seal Kit Air Motor

Download PDF, 1.4 MB



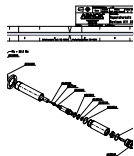
Seal Kit Suction System

Download PDF, 1.2 MB



Repair Kit

Download PDF, 1.2 MB



Conversion Kit

Download PDF, 1.2 MB



Operating Manual

Download PDF, 1.3 MB