

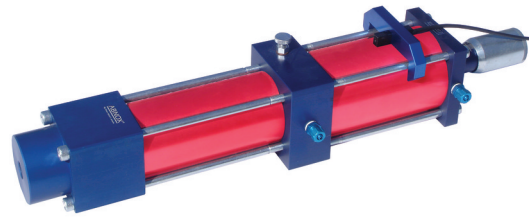
## Station

4197504

**Model** Station  
**Construction** Sensor P

### Type

**Version** 10.0 - 133 ccm



## Description

ABNOX Metering Valve Stations with Sensor present a low cost and hence frequently used solution for monitoring the dosage process. This dispensing interrogation facilitates an optimal process supervision and guarantees a high service life through his robust construction. These Metering Valve Stations are suitable in particular for large volume metering applications and offer a simple and fast mounting option directly at the Metering Valve.

The Metering Valve Station is available in different dispensing ranges. The dosage chamber volume is continuously adjustable by a screw adjustment. With the standard nozzles ABNOX constructs specific customised application nozzles which can be directly screwed to metering valve.

Function: A proximity switch on the pneumatic control cylinder, and a magnetic ring attached to the pneumatic piston make up the control device to monitor the function of the control pin of the metering valve. By detection of the pneumatic piston position (starting position), the location of the control pin and the opened or closed state of the metering valve are determined.

## Spare Parts:

Description	Article-No.
Seal Kit	4197900
Valve rod cpl.	4221600



**You will find more information in the downloads section under "Spare Parts List"**

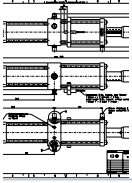
## Technical Data

	4197504
Model	Station
Construction type	Sensor P
Dispensing range (ccm)	10.0 - 133.0
Weight (kg)	6.6
Connection (medium) internal thread P	1/4" BSP
Connection (Medium) External Thread P	1/4" BSP
Connection (compressed air) internal thread	1/8" BSP
Pressure output A	3/8" BSP
Fastening thread	4 x M8
Max. pressure (bar)	200
Pressure Out (bar)	80
Min. operating air pressure (bar)	5.0
Optimum operating air pressure (bar)	6.0
Max. operating air pressure (bar)	7.0
Specification for operation medium	Lubricants up to NLGI 3 / max. 1'000'000 m Pa.s



## Downloads

---



### **Dimensioned Sketch**

Download PDF, 0.3 MB

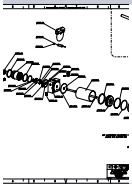
---



### **Operating Manual**

Download PDF, 1.4 MB

---



### **Spare Parts List**

Download PDF, 1.1 MB

---

