

Station

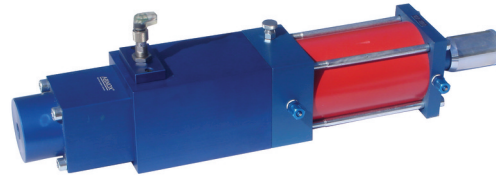
4197503

Model Station

Construction Sensor H

Type

Version 10.0 - 133 ccm



Description

ABNOX Metering Valve Stations with Sensor present a low cost and hence frequently used solution for monitoring the dosage process. This dispensing interrogation facilitates an optimal process supervision and guarantees a high service life through his robust construction. These Metering Valve Stations are suitable in particular for large volume metering applications and offer a simple and fast mounting option directly at the Metering Valve.

The Metering Valve Station is available in different dispensing ranges. The dosage chamber volume is continuously adjustable by a screw adjustment. With the standard nozzles ABNOX constructs specific customised application nozzles which can be directly screwed to metering valve.

Function: The pneumatic part of the metering valve is controlled over an external pneumatic 5/2-way valve. The lubricant dosing is then initialized. The dispensing pressure depends on the pressure in the lubricant (medium). The air- and the lubricant chamber is separated from each other. The process safety increases itself through the specific construction. The initiator sends an electric impulse if the cycle is closed and the lubricant (medium) is ejected.

Tip: To guarantee a process-safe functioning of the Sensor H, the smallest adjusted metering mount has to be approx. 10% larger than the minimal amount marked on the valve. ABNOX recommends the nearest smaller valve to the lower dispensing range.



Spare Parts:

Description	Article-No.
Seal Kit	4197900
Valve rod cpl.	4221600

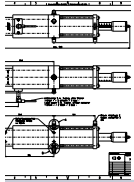
You will find more information in the downloads section under "Spare Parts List"

Technical Data

	4197503
Model	Station
Construction type	Sensor H
Dispensing range (ccm)	10.0 - 133.0
Weight (kg)	7.7
Connection (medium) internal thread P	1/4" BSP
Connection (Medium) External Thread P	1/4" BSP
Connection (compressed air) internal thread	1/8" BSP
Pressure output A	3/8" BSP
Fastening thread	4 x M8
Max. pressure (bar)	200
Pressure Out (bar)	80
Min. operating air pressure (bar)	5.0
Optimum operating air pressure (bar)	6.0
Max. operating air pressure (bar)	7.0
Specification for operation medium	Lubricants up to NLGI 3 / max. 1'000'000 m Pa.s



Downloads



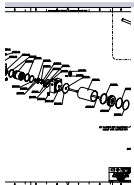
Dimensioned Sketch

Download PDF, 0.3 MB



Operating Manual

Download PDF, 1.4 MB



Spare Parts List

Download PDF, 1.2 MB

