

Station

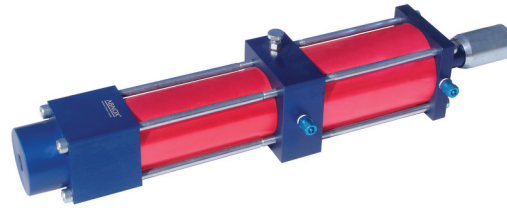
4197500

Model Station

Construction Standard

Type

Version 10.0 - 133 ccm



Description

The ABNOX Metering Valve Station can be attached to the base block easily and quick. To activate a 5/2-way-valve is required.

The Metering Valve Station is available in different dispensing ranges. The metering tolerance is maintained to better than +/- 2% in the middle range of dosage volume. The output can be adjusted continuously.

With the standard nozzles ABNOX Ltd. constructs specific customised application nozzles which can be directly screwed to metering valve.

Spare Parts:

Description	Article-No.
Seal Kit	4197900
Valve rod cpl.	4221600

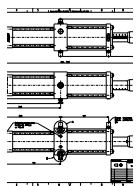
You will find more information in the downloads section under "Spare Parts List"



Technical Data

	4197500
Model	Station
Construction type	Standard
Dispensing range (ccm)	10.0 - 133
Weight (kg)	6.6
Connection (medium) internal thread P	1/4" BSP
Connection (Medium) External Thread P	1/4" BSP
Connection (compressed air) internal thread	1/8" BSP
Pressure output A	3/8" BSP
Fastening thread	4 x M8
Max. pressure (bar)	200
Pressure Out (bar)	80
Min. operating air pressure (bar)	5.0
Optimum operating air pressure (bar)	6.0
Max. operating air pressure (bar)	7.0
Specification for operation medium	Lubricants up to NLGI 3 / max. 1'000'000 m Pa.s

Downloads



Dimensioned Sketch

Download PDF, 0.3 MB



Operating Manual

Download PDF, 1.4 MB



Spare Parts List

Download PDF, 1.1 MB

