

## Station

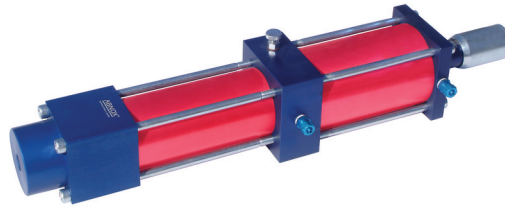
4197000

**Model** Station

**Construction** Standard

**Type**

**Version** 5.0 - 54.0 ccm



## Description

The ABNOX Metering Valve Station can be attached to the base block easily and quick. To activate a 5/2-way-valve is required.

The Metering Valve Station is available in different dispensing ranges. The metering tolerance is maintained to better than +/- 2% in the middle range of dosage volume. The output can be adjusted continuously.

With the standard nozzles ABNOX Ltd. constructs specific customised application nozzles which can be directly screwed to metering valve.

Nebst den Standarddüsen erstellt ABNOX AG nach Wunsch spezielle kundenspezifische Applikationsdüsen, welche direkt an das Dosierventil geschraubt werden.

## Spare Parts:

Description	Article-No.
Seal Kit	4196900





**You will find more information in the downloads section under "Spare Parts List"**

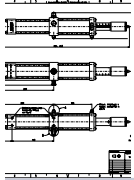
## Technical Data

	4197000
Model	Station
Construction type	Standard
Dispensing range (ccm)	5.0 - 54.0
Weight (kg)	2.7
Connection (medium) internal thread P	1/4" BSP
Connection (Medium) External Thread P	1/4" BSP
Connection (compressed air) internal thread	1/8" BSP
Pressure output A	1/4" BSP
Fastening thread	4 x M6
Max. pressure (bar)	200
Pressure Out (bar)	80
Min. operating air pressure (bar)	5.0
Optimum operating air pressure (bar)	6.0
Max. operating air pressure (bar)	7.0
Specification for operation medium	Lubricants up to NLGI 3 / max. 1'000'000 m Pa.s



## Downloads

---



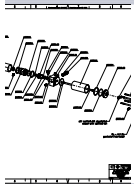
### Dimensioned Sketch

Download PDF, 0.2 MB



### Operating Manual

Download PDF, 1.3 MB



### Spare Parts List

Download PDF, 1.2 MB

---

