

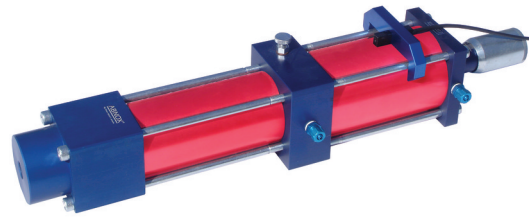
Station

4196504

Model Station
Construction Sensor P

Type

Version 2.0 - 26.0 ccm



Description

ABNOX Metering Valve Stations with Sensor present a low cost and hence frequently used solution for monitoring the dosage process. This dispensing interrogation facilitates an optimal process supervision and guarantees a high service life through his robust construction. These Metering Valve Stations are suitable in particular for large volume metering applications and offer a simple and fast mounting option directly at the Metering Valve.

The Metering Valve Station is available in different dispensing ranges. The dosage chamber volume is continuously adjustable by a screw adjustment. With the standard nozzles ABNOX constructs specific customised application nozzles which can be directly screwed to metering valve.

Function: A proximity switch on the pneumatic control cylinder, and a magnetic ring attached to the pneumatic piston make up the control device to monitor the function of the control pin of the metering valve. By detection of the pneumatic piston position (starting position), the location of the control pin and the opened or closed state of the metering valve are determined.

Spare Parts:

| Description | Article-No. |
|----------------|-------------|
| Seal Kit | 4196900 |
| Valve rod cpl. | 4228100 |



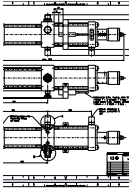
You will find more information in the downloads section under "Spare Parts List"

Technical Data

| | |
|---|---|
| | 4196504 |
| Model | Station |
| Construction type | Sensor P |
| Dispensing range (ccm) | 2.0 - 26.0 |
| Weight (kg) | 2.4 |
| Connection (medium) internal thread P | 1/4" BSP |
| Connection (Medium) External Thread P | 1/4" BSP |
| Connection (compressed air) internal thread | 1/8" BSP |
| Pressure output A | 1/4" BSP |
| Fastening thread | 4 x M6 |
| Max. pressure (bar) | 200 |
| Pressure Out (bar) | 80 |
| Min. operating air pressure (bar) | 5.0 |
| Optimum operating air pressure (bar) | 6.0 |
| Max. operating air pressure (bar) | 7.0 |
| Specification for operation medium | Lubricants up to NLGI 3 / max. 1'000'000 m Pa.s |

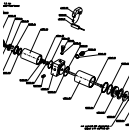


Downloads



Dimensioned Sketch

Download PDF, 0.3 MB



Spare Parts List

Download PDF, 0.7 MB



Operating Manual

Download PDF, 1.6 MB

