

## AX-2000-4-M

4355400

<b>Model</b>	AX-2000-4-M
<b>Construction</b>	Container height 850 mm
<b>Type</b>	
<b>Version</b>	Container 180 kg



## Description

Electric-operated Grease Pump AX 2000 230 V AC / 50Hz and 60Hz for container up to 180 kg and max. height 850 mm.

Pressure independent output up to 200 bar working pressure.

Low – noise due the optimal match of motor, gear box and pump.

## Technical Data

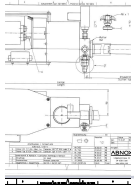
**\*\* = Delivery rate metered at pump outlet (Medium NLGI 2) by 200 bar counterpressure and by 20°C ambient temperature.**

	4355400
Capacity container (kg)	180
Container height (mm)	850
Suction tube dia. (mm)	32
Suction tube length (mm)	849
Min. / Max. temperature (°C)	10 / 40
Specification for operation medium	Lubricants up to NLGI 3 / 5000 m Pa.s
Max. output pressure (medium) (bar)	200
Delivery rate at pump outlet [cm <sup>3</sup> /min]	280 **
Current input (A)	5
Starting Current (A)	15
Voltage (V AC)	230
Frequency (Hz)	50 / 60
Power (kW)	0.40
Duty Cycle (%)	100
Protective System DIN 40050	IP 55
Connection (Medium) External Thread P	1/4" BSP



## Downloads

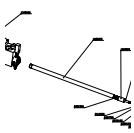
---



### **Dimensioned Sketch**

Download PDF, 0.2 MB

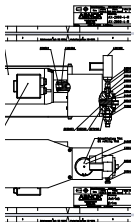
---



### **Spare Parts List all inc.**

Download PDF, 0.4 MB

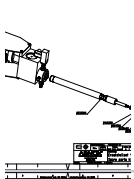
---



### **Spare Parts Kit Drive/Motor**

Download PDF, 0.2 MB

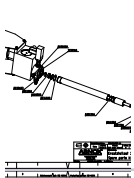
---



### **Spare Parts Kit Suction System**

Download PDF, 0.4 MB

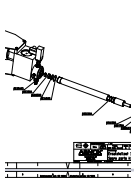
---



### **Spare Parts Kit 2**

Download PDF, 0.5 MB

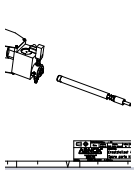
---



### **Spare Parts Kit 3**

Download PDF, 0.5 MB

---



### **Spare Parts Kit 4**

Download PDF, 0.4 MB

---

