

AX-2000-2-M

4355200

Model	AX-2000-2-M
Construction	Container height 470 mm
Type	
Version	Container 20 - 25 kg



Description

Electric-operated Grease Pump AX 2000 230 V AC / 50Hz and 60Hz for container up to 25 kg and max. height 470 mm.

Pressure independent output up to 200 bar working pressure.

Low – noise due the optimal match of motor, gear box and pump.

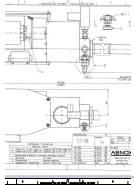
Technical Data

**** = Delivery rate metered at pump outlet (Medium NLGI 2) by 200 bar counterpressure and by 20°C ambient temperature.**

	4355200
Capacity container (kg)	20 - 25
Container height (mm)	470
Suction tube dia. (mm)	32
Suction tube length (mm)	477
Min. / Max. temperature (°C)	10 / 40
Specification for operation medium	Lubricants up to NLGI 3 / 5'000 m Pa.s
Max. output pressure (medium) (bar)	200
Delivery rate at pump outlet [cm ³ /min]	280 **
Current input (A)	5
Starting Current (A)	15
Voltage (V AC)	230
Frequency (Hz)	50 / 60
Power (kW)	0.40
Duty Cycle (%)	100
Protective System DIN 40050	IP 55
Connection (Medium) External Thread P	1/4" BSP

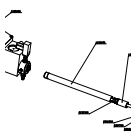


Downloads



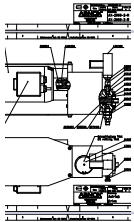
Dimensioned Sketch

Download PDF, 0.2 MB



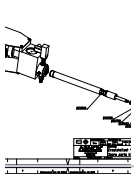
Spare Parts List all inc.

Download PDF, 0.4 MB



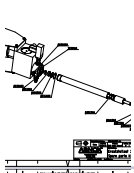
Spare Parts Kit Drive/Motor

Download PDF, 0.2 MB



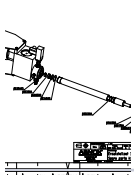
Spare Parts Kit Suction System

Download PDF, 0.4 MB



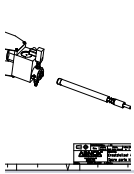
Spare Parts Kit 2

Download PDF, 0.5 MB



Spare Parts Kit 3

Download PDF, 0.5 MB



Spare Parts Kit 4

Download PDF, 0.4 MB

